

LABORATORY LINE



carlo de giorgi

LABORATORY LINE INDEX

ACCESSOIRES FOR PORTABLE SUCTION UNITS	21	MIXER	6
AIR TURBINE S-AIR MILL	15	MIXER FOR COATING, CAST AND PLASTERS	11
ARTICOLATORS	19	MOTOR ACCESSORIES	28
BRUSHLESS LABORATORY MICROMOTORS	4-5	MOTOR DRIVEN CENTRIFUGES	16
BUNSEN	9	OIL VACUUM PUMP	15
CERAMIC FURNACE	14	PLASTER MODEL TRIMMER	18
CIRCULAR SAW	10	PNEUMATIC HAMMER	11
DENTISTRY MICROMOTOR	5	PRE-HEATING CYLINDER FURNACE	14
DRILL PLASTER MACHINE	13	POLISHING MACHINES	24-25
FLEXIBLE SHAFT WITH HAND-PIECES	30	PORTABLE MICROMOTORS WITH RECHARGEABLE BATTERY	5
HANGING TYPE MOTORS	26-27-28	PORTABLE SUCTION UNITS	20-21
HAND-PIECES	31	SAND BLASTING MACHINE	17
HAND-PIECES WITH AMERICAN FOREDOM CONNECTION	32	STEAM CLEANER	9
HYDRAULIC PRESS	13	SUCTION BENCHES	18
INDUCTION BUNSEN	8	UNIVERSAL PHOTOPOLYMERIZATOR	17
INDUCTION MELTING MACHINE	16	UV POLYMERIZING	7
LABORATORY FLEXIBLE SHAFTS WITH BEARINGS	29	ULTRASONIC WASHING MACHINE	22-23
LABORATORY MICROMOTORS	3	WATER TURBINE S-AQUA MILL	15
LABORATORY VIBRATORS	10	WELDINGTORCH	12
MAGNIFYING LAMP	7	WORKING CHAIR	12
MICROTORCHES	8	WORK STATION	19

LABORATORY MICROMOTORS

item: 436/00 - MICROMOTOR REHNE 119



Carbon brush micromotor. Heavy and durable. Ergonomic and compact design. High performance. High accuracy of rotation. Minimal noise and vibration.

price: € 370,00

Technical features:

Power absorbed:	65 Watt
Feeding:	230 V - Hz 50/60
Speed:	1.000 - 35.000 rpm
Reverse:	5.000 rpm max
Torque max:	3,0 Ncm
Foot switch:	ON/OFF
Quick clamping fixing	
Hand piece weight:	200 g (without cable)
Control unit weight:	970 g
Standard size collet:	Ø 2,35 mm (Ø 3 mm upon request)

item: 437/00 - MICROMOTOR REHNE 119



Carbon brush micromotor. Heavy and durable. Ergonomic and compact design. High performance. High accuracy of rotation. Minimal noise and vibration.

price: € 420,00

Technical features:

Power absorbed:	65 Watt
Feeding:	230 V - Hz 50/60
Speed:	1.000 - 35.000 rpm
Reverse:	5.000 rpm max
Torque max:	3,0 Ncm
Hand / Foot control	
Quick clamping fixing	
Hand piece weight:	200 g (without cable)
Control unit weight:	970 g
Standard size collet:	Ø 2,35 mm (Ø 3 mm upon request)

item: 441/00 - MICROMOTOR REHNE 317



Carbon brush micromotor. Heavy and durable. Ergonomic and compact design. High performance. High accuracy of rotation. Minimal noise and vibration.

price: € 560,00

Technical features:

Power absorbed:	80 Watt
Feeding:	220-240 V - Hz 50/60
Speed:	1.000 - 45.000 rpm
Reverse:	5.000 rpm max
Torque max:	4,5 Ncm
Hand / Foot control	
Quick clamping fixing	
Hand piece weight:	200 g (without cable)
Control unit weight:	970 g
Standard size collet:	Ø 2,35 mm (Ø 3 mm upon request)

BRUSHLESS LABORATORY MICROMOTORS

item: 332/00 - PRIME 202



Brushless micromotor. Ergonomic and compact design. Strong Torque at low speed. Heavy and durable. Minimal noise and vibration. Ergonomic and safe grip. High performance. High accuracy of rotation. Self-diagnosis system.

price: € 410,00

Technical features:	
Power absorbed:	80 Watt
Feeding:	220-240 V - Hz 50/60
Speed:	1.000 - 45.000 rpm
Torque max:	4,8 Ncm
Hand / Foot control	
Foot switch:	stepless speed regulation
Quick clamping fixing	
Hand piece weight:	220 g (without cable)
Control unit weight:	2,32 Kg
Standard size collet:	Ø 2,35 mm (Ø 3 mm upon request)

item: 333/00 - PRIME 115



Brushless micromotor. Ergonomic and compact design. Strong Torque at low speed. Minimal vibration. Ergonomic and safe grip. Self-diagnosis system.

price: € 690,00

Technical features:	
Power absorbed:	210 Watt
Feeding:	230 V - Hz 50/60
Speed:	1.000 - 50.000 rpm
Torque max:	6,8 Ncm
Hand / Foot control	
Increased holding force of collets	
Quick clamping fixing	
Hand piece weight:	220 g (without cable)
Control unit weight:	2,32 Kg
Standard size collet:	Ø 2,35 mm (Ø 3 mm upon request)

item: 334/00 - PRIME 407



Brushless micromotor. Ergonomic and compact design. Strong Torque at low speed. Minimal vibration. Ergonomic and safe grip. Self-diagnosis system.

price: € 790,00

Technical features:	
Power absorbed:	230 Watt
Feeding:	230 V - Hz 50/60
Speed:	1.000 - 50.000 rpm
Torque max:	7,8 Ncm
Hand / Foot control	
Increased holding force of collets	
Quick clamping fixing	
Hand piece weight:	220 g (without cable)
Control unit weight:	2,32 Kg
Standard size collet:	Ø 2,35 mm (Ø 3 mm upon request)

BRUSHLESS LABORATORY MICROMOTORS

item: 336/00 - PRIME 926



Brushless micromotor. Ergonomic and compact design. High power and speed. LCD Display. Strong Torque at low speed. Self-diagnosis system.
price: € 1.280,00

Technical features:

Power absorbed:	210 Watt
Feeding:	230 V - Hz 50/60
Speed:	1.000 - 50.000 rpm
Torque max:	6,8 Ncm
Hand / Foot control	
Increased holding force of collets	
Quick clamping fixing	
Hand piece weight:	220 g (without cable)
Control unit weight:	2,32 Kg
Standard size collet:	Ø 2,35 mm (Ø 3 mm upon request)

DENTISTRY MICROMOTOR

item: 438/00R - MICROMOTOR REHNE 119 E-TYPE



Carbon brush micromotor with E-Type connection. Designed to be connected to straight handpiece or contra-angles. Ergonomic and compact design. High performance. Minimal noise and vibration
price: € 350,00

Technical features:

Power absorbed:	65 Watt
Feeding:	230 V - Hz 50/60
Speed:	1.000 - 35.000 rpm
Reverse:	5.000 rpm max
Torque max:	3,0 Ncm
Foot switch:	ON/OFF
Hand speed control	
Hand piece weight:	140 g (without cable)
Control unit weight:	1,1 Kg

PORTABLE MICROMOTORS WITH RECHARGEABLE BATTERY

item: 540/00 - PORTABLE MICROMOTOR THUMB+PEHB



Micromotor E-type connection, with rechargeable nichel-cadmio battery, power 100 Watt and 5 hours of charge lasting.
price: € 535,00

item: 541/00 - PORTABLE MICROMOTOR THUMB+POHP



Micromotor with handpiece, with rechargeable nichel-cadmio battery, power 100 Watt and 5 hours of charge lasting.
price: € 645,00

MIXER

Small and powerful. The mixers MX join a very good service to a simplicity of use. They are suitable for mixing in AIR ABSENCE any kind of plaster, coating and silicone. They are equipped with a low-noise motor reducer, a dry running vacuum pump and an electronic timer of proven reliability. The model MXV, available in 110 or 220 Volt, has the possibility to regulate speed rotation and to invert rotation and it's particular recommended for mixing alginate with alginate cup 200 cc. (MX205). The mixers can be positioned indifferently on the table (MXVT) or to the wall (MXVW) with brackets (also at disposal as optional: MX 260 wall bracket - MX 270 table support). The machine is equipped with a 500 cc cup. Four different capacity of cups are available under request: 200, 500, 1000, 2000 cc.

item: 780/00 - MX4T



Mixer MX4T 400 rpm/0,8 bar equipped with a 500 cc cup and table support.

price: € 1.240,00

item: 785/00 - MX4W

Mixer MX4W 400 rpm/0,8 bar equipped with a 500 cc cup and wall support.

price: € 1.200,00



CUPS

Four cups of different capacity suitable for mixing plaster, coating and silicone. Built in plastic material and stainless steel.



item: MX200	
Cup 200 cc with filter.	price: € 180,00
item: MX205	
Cup 200 cc with filter for alginate.	price: € 240,00
item: MX210	
Cup 500 cc with filter.	price: € 180,00
item: MX230	
Cup 1000 cc with filter.	price: € 220,00
item: MX240	
Cup 2000 cc with filter.	price: € 290,00

MAGNIFYING LAMP

item: 790/00 - MAGNIFYING LAMP LC300/C

Magnifying lamp with cover with central lens 3 diopter and with one 26 W cold fluorescent light. It's supplied with desktop clamp (L003).

price: € 130,00

Technical features:

Voltage:	230 V - Hz 50/60
Light source:	1 x 26 Watt
Lens material:	glass
Lens size:	155 mm x 185 mm
Diopter:	3
Weight with desktop clamp L003:	5 Kg



item: LAMP090/00

LED lamp with magnifying lens 3 an 5 diopters (central). Energy-saving fluorescent light 26 Watt. Complete with table clamp.

price: € 70,00



item: LAMP089/00

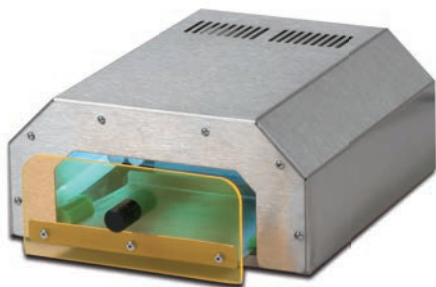
Table lamp with LED light.

price: € 65,00



UV POLYMERIZING

item: 795/00 - POLYMERIZING UV FP36



UV polymerizing equipment for resin and photosensitive materials. It's made in stainless steel and it includes:

- 1 sliding drawer that can contain 3 models.
- 4 bulbs 9 W each one.
- 1 timer 120-180 sec.
- 1 switch for endless time.

price: € 280,00

item: 795/20

Replacement kit 4 bulbs 9 Watt.

price: € 70,00

item: 689/00 - POLYMERIZING UV



UV polymerizing equipment for resin and photosensitive materials. 4 bulbs 9 W each one (36 Watt).

price: € 75,00

item: 689/20

Replacement kit 4 bulbs 9 Watt.

price: € 35,00



MICROTORCHES

item: 219/00 - MICROTORCH GT-3000S



Technical features:	
Lighting:	piezoelectric
Gas lasting:	20-25 minutes
Flame temperature:	1300° C
Type of gas:	butane / propane
Weight:	250 g

price: € 95,00 (quantity discount)

item: 229/00 - MICROTORCH PT-4000



Technical features:	
Lighting:	piezoelectric
Gas lasting:	10-15 minutes
Flame temperature:	1300° C
Type of gas:	butane / propane
Weight:	100 g

price: € 55,00 (quantity discount)

item: 219/01 - GAS REFILLING BOMB



Spare gas refilling for Micro-torches, GT 3000S and PT 4000. 600 ml.

price: € 14,00

INDUCTION BUNSEN

item: 213/00 - INDUCTION BUNSEN iLab



Bunsen electronic induction to operate with ease and precision. An instrument of innovative work that looks at your security. The burner heats the spatula in less than two seconds, a sensor located above the chamber for the induction detects the presence and activates the heating phase, as well as the stops when you move away from the work area. Instant heating of the instrument. Precise and safe, for without flame. Induction technology.

price: € 290,00

BUNSEN

The safety bunsen burner is built up in order to follow up all safety standards. This is equipped with safety thermo-couple to stop the gas exit, in case of accidentally flame, lighting off.



item: 215/00 - SICURBUNSEN, natural gas

price: € 110,00

item: 216/00 - SICURBUNSEN, propane gas

price: € 110,00

Bunsen burner, with pilot light, available with natural gas and propane gas.



item: 200/00 - BUNSEN, natural gas

price: € 90,00

item: 210/00 - BUNSEN, propane gas

price: € 90,00

STEAM CLEANER

item: 710/00 - CLEANER 150



3.5 bar-steam generator for the decontamination and cleaning of metals, ceramic, resins, etc. The boiler has a capacity of 5 litres and is completely made from robotized welded AISI stainless steel. The latest model offers innovative solutions that guarantee years of reliable performance with minimum maintenance required. The steam gun is thermoinsulating and has four different nozzles. The steam ejection function is pedal-operated, against accidental electrocution caused by humidity. Constructed and tested in compliance with EC norms.

price: € 1.100,00

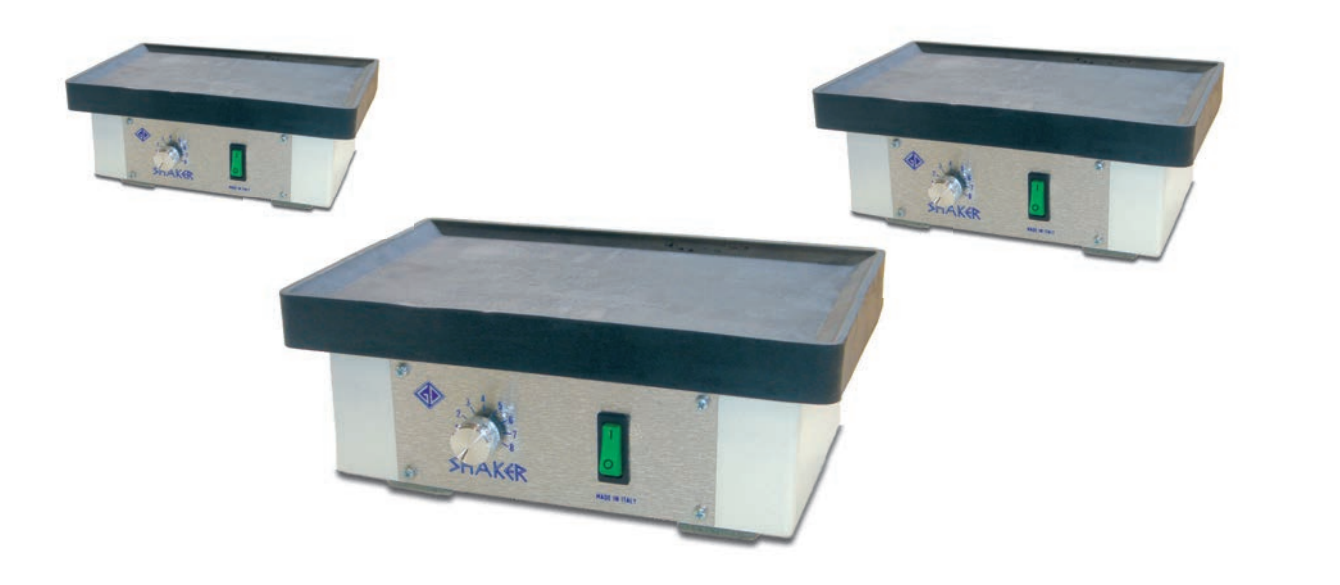
Technical features:

Working pressure:	3,5 bar
Heater capacity:	5 lt
Sizes:	22x34x40 cm
Weight:	12 Kg

LABORATORY VIBRATORS

Laboratory Vibrators SHAKER guarantee a notable power, variable via electronic circuit with anti-trouble filter. They have a removable rubber surface with counter-sink edges for an easy cleaning even with steam (high thermic and mechanical resistance of the materials). Our Vibrators guarantee an high noiseless and steadiness thanks to of the perfect vertical movement, deadened by four little feet of soft mousse.

item: 722/00 - SHAKER 2	price: € 250,00
item: 724/00 - SHAKER 4	price: € 300,00
item: 726/00 - SHAKER 6	price: € 430,00



Technical features:	SHAKER 2	SHAKER 4	SHAKER 6
N° cilindres:	2	4	6
Overall size:	14,5x16,5x8,5 cm	16x25x10 cm	36x26x13 cm
Useful work plane:	13x15 cm	15x23 cm	34x24 cm
Absorption:	120 Watt	150 Watt	400 Watt
Feeding:	230V/50 Hz	230V/50 Hz	230V/50 Hz
Weight:	3 Kg	4,8 Kg	10 Kg

CIRCULAR SAW

item: 700/00 - CIRCULAR SAW



This saw has been designed to cut any kind of pattern with absolute precision. It guarantees maximum safety to the operator. All controls run on low voltage and protected (IP54) with appropriate devices against humidity and dust. The magnetic table guarantees excellent stability of the base plate and pattern stand, that can be slanted and locked an any position. The diamond disc combines a specular finish with a considerable cutting depth. A suction unit should be connected (to the coupling on the back) to ensure correct operation.

price: € 1.980,00

item: 700/20 - ACCU-TRAC modelholder	price: € 160,00
item: 700/21 - Sleek diamond disc Ø 80x0,2 mm	price: € 95,00
item: 700/22 - Thoded diamond disc Ø 80x0,2 mm	price: € 95,00

Technical features:	
Feeding:	230 V - Hz 50/60
Motor power:	60 Watt
Speed:	2.800 rpm
Diamond disc:	Ø 80x0,2 mm
Weight:	10 Kg

MIXER FOR COATINGS, CAST AND PLASTERS

item: 741/00 - MIXER



The Mixer for coatings, cast and plasters can perform the entire cycle (paddling, pouring of the coating, vibration) in vacuum conditions. The incorporated vacuum pump is extremely silent and fitted with an original system for oil recovery and re-circulation which makes it entirely maintenance-free. The paddling is obtained by a shielded-poles gear motor that makes the paddle rotate at a speed of 200 rpm. The machine is supplied with a digital electronic Timer that can be used to set the paddling time. As the pre-set time elapses (shown on the display), the paddling stops and the pouring and vibration can start. During the pouring of the coating, the vibrator can be turned on and the intensity regulated. The machine comes with a complete set of cups in transparent poly-carbonate: 1 cover with paddle, 1 coating cup with regulating tap, 1 cup for plaster, 1 inferior cup, 1 rubber base for cylinder. This vacuum paddle and pouring processing assures excellent results, with compact coatings air bubbles and blowholes free.

price: € 1.750,00

item: 741/20 - Cup capacity 270 cc for plaster price: € 260,00

item: 741/21 - Cup capacity 650 cc for plaster price: € 260,00

item: 741/22 - Cup capacity 650 cc for coatings price: € 260,00

Technical features:

Dimensions:	30x42x61 cm
Weight:	35 Kg
Feeding:	220 V - 50 Hz
Power:	500 Watt
Cup capacity:	650 cc
Paddle-mix speed:	200 rpm
Max vacuum:	720 mm/Hg

PNEUMATIC HAMMER

item: 745/00 - HAMMER



This instrument allows to smooth away fastly and easily eliminate the undesidered borders of chalk models. The motor of pneumatic functioning, requires a reduced maintenance; it is extremely lasting.

price: € 370,00

item: 745/20 - Small spare tool price: € 40,00

item: 745/21 - Medium spare tool price: € 40,00

item: 745/22 - Big spare tool price: € 40,00

Technical features:

Air consumption:	50 lt/min.
Exercise pressure:	from 5 to 7 atm
Weight:	230 g

WORKING CHAIR

item: 594/00 - WORKING CHAIR



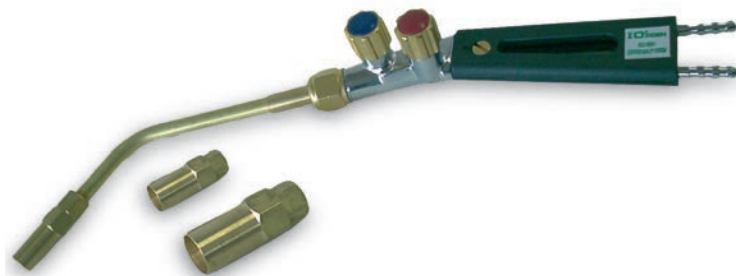
Working chair with:

- Base made up of reinforced nylon with fiber glass.
- Double pirouetting wheels.
- Seat and back of multilayers beech.
- Rotation and raising by gas movement.
- Articulated back adjustable.
- Certified Catas in conformity with European Regulations UNI/8587/84, UNI/8585/84, 9089/87, 8582/84;
- Weight: 7,8 Kg.

price: € 185,00

WELDINGTORCH

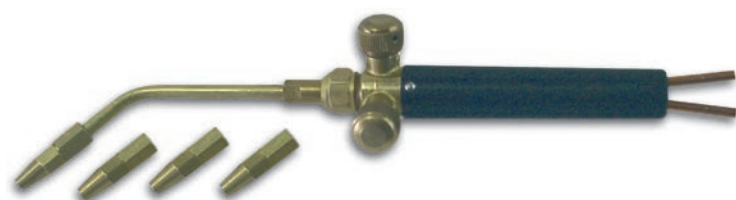
item: 420/00 - WELDINGTORCH



Compressed air + propane gas or natural, complete with three nozzles, 1300 °C.

price: € 290,00

item: 440/00 - MICRO-WELDINGTORCH



Oxygen + Propane or natural Gas, complete with 4 nozzles, 1300 °C.

price: € 250,00

HYDRAULIC PRESS

item: 719/00 - HYDRAULIC PRESS



The hydraulic press is used by the dental technician to mould mobile prosthesis, through the compression of the resin inside the muffle. The hydraulic press "GD" is able to clamp up to 3 muffles and reach a maximum pressure of 400 bars, exerting on the muffles a force of 15.000 Kg (150.000 N). The working pressure should be limited to 200 bar. The press features a manual pump operated directly by the user through a lever. The strength operated on the lever is proportioned to the inner pressure, therefore with an increasing pressure the strength used by the operator must increase as well. This is to avoid reaching too high pressures which could damage the machine. The oil-pressure circuit is fully airtight and doesn't need any maintenance.

price: € 610,00

Technical features:

Working pressure:	200 bar
Max pressure:	400 bar
Max force:	15.000 Kg
Base material:	hydraulic cast iron
Weight:	20 Kg

item: 719/01 - Brass muffle in four parts. price: € 90,00

item: 719/02 - Molten aluminium flask (for one muffle). price: € 100,00

item: 719/03 - Molten aluminium flask (for two muffle). price: € 100,00

DRILL PLASTER MACHINE

item: 746/00 - PIN 2000



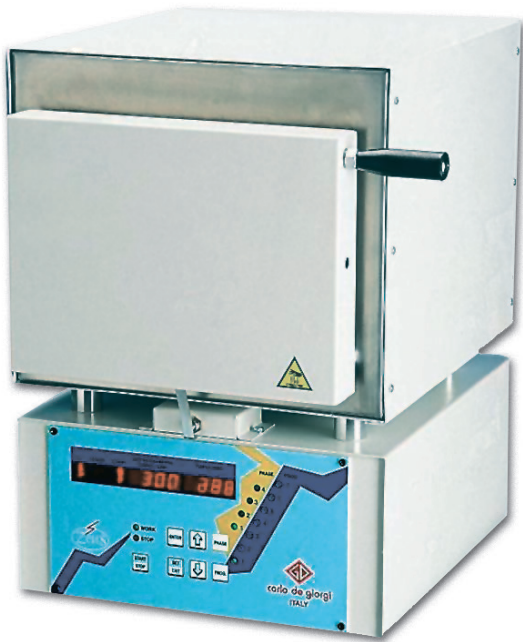
The PIN 2000 drill plaster machine is capable of drilling plaster models or plexi-glass and PVC bases for the application of conical pins in the removable stump technique. The machine is supplied with a Laser pointer system that allows a fast and safe alignment of the perforation. This is done by holding firmly with both hands the model in the position where the drill must be performed (indicated by the red laser beam) and at the same time, by lowering the working surface towards the rotating tip. The perforation depth can be regulated by rotating a nut, clearly located on the front of the machine. This machine is very precise and vibrations free: a due condition if a perfect drilling wants to be obtained. The engine is powerful and enables the end user to drill also plexi-glass and PVC bases.

price: € 1.040,00

Technical features:

Power supply:	120 Watt
Rotating speed:	2.800 rpm
Feeding:	220 V AC-50 Hz
Tip diameter:	3 mm
Dimensions:	25x26x40 cm
Weight:	15 Kg

PRE-HEATING CYLINDER FURNACE



The oven can storing up to 7 pre-heating cycles (or programs) which are kept in the memory until the operator decides to modify them. Each program contains 4 phases and for each phase it is possible to set 3 variables: temperature, increase rate, holding time. It is also possible to set an Ignition delay and the fumes aspiration fan Off temperature (fume chimney). Furthermore it is possible to set a final temperature holding time at the end of the cycle: this is to keep the cylinders at a certain temperature and allow some time for the operator to be ready with the next work.

item: 835/00 - ZEUS 1	price: € 1.850,00
item: 836/00 - ZEUS 2	price: € 2.080,00
item: 837/00 - ZEUS 3	price: € 2.730,00

Technical features:	ZEUS 1	ZEUS 2	ZEUS 3
Feeding:	220-240 V	20-240 V	220-240 V
Overall dimensions:	32x40x50 cm	36x46x52 cm	42x53x55 cm
Chamber dimensions:	16x16x10 cm	18x23x11,5 cm	23x30x15 cm
Max temperature:	1100 °C	1100 °C	1100 °C
Weight:	28 Kg	35 Kg	45 Kg

CERAMIC FURNACE

item: 834/00 - ZEUS 4 PLUS



This furnace is the last generation one for firing ceramics, it is managed by an electronic control designed to extremely simplify and ease up the technician's work in all the working cycle phases. The furnace can memorise up to 100 programmes, with 15 functions (variables), can manage the vacuum level and regulate the cooling speed. All these features along with a simple and rugged mechanics make of this Zeus 4 plus a very flexible furnace perfect to fine any kind of ceramic.

price: € 4.100,00 (vacuum pump not included)

Technical features:	
Feeding:	230 V-50/60 Hz
Power (without pump):	1200 Watt
Fuse:	10A
Dimensions:	40x44x49 cm
Available programs:	100 (80+20)
Chamber:	quartz resistance
Max temperature:	1200 °C
Self-calibrating program:	OK
Manual calibration program:	OK
Vacuum level:	OK

OIL VACUUM PUMP

item: 834/30 - OIL VACUUM PUMP



Very powerful, compact and noiseless, it creates a vacuum higher than 99% of the absolute vacuum (755mmHg).

price: € 430,00

WATER TURBINE S-AQUA MILL

item: 315/00 - S-AQUA MILL



The new S-AQUA MILL version is characterized by two types of water spray (a mist or droplets) and is ideal for precision milling of ceramics. The water spray coolant prevents the generation of heat during working, preventing any micro-fractures of the article.

Technical features:

- Speed 320.000 rpm.
- Swivel twist-lock handpiece.
- Unique dust-proof mechanism.
- Water coolant spray.
- Low noise and vibration.

price: € 1.570,00

AIR TURBINE S-AIR MILL

item: 312/00 - S-AIR MILL



Ideal tool for the processing of ceramics, on the air turbine speeds up the process by improving the level of accuracy of the finished product, without resorting to trouble some lubrication means.

Technical features:

- Speed 320.000 rpm.
- Low noise and vibration.
- Swivel twist-lock handpiece.
- Unique dust-proof mechanism.

price: € 1.100,00

MOTOR DRIVEN CENTRIFUGES

The motor-driven centrifuge is used, during casting processes with oxi-propane blow torch, to pour the fused metal inside the mould (cylinder) in which, previously with the method of "lost-wax", we obtained the negative of the object we want to make. The machine is entirely manufactured in compliance with the CEE safety directives and therefore allows the performance of the operation in complete operator's safety. The machine works exclusively when completely closed and the rotating movement is produced by a self-braking engine, which will stop the machine as soon as the operating door is opened. The centrifuge is provided with a digital Timer which enables the end user to set the centrifuge time and with a start-up speed adjuster, depending on the type of casting metal. The machine arm has two joints, allowing a slow and soft starting. The machine is easily repaired with common tools.



item: 740/00 - CASTING - Without base	price: € 1.890,00
item: 900/00 - CASTING - With base	price: € 2.360,00
item: 31C - Spare crucible	price: € 16,00
item: 32C - Set di 4 Degussa type cylinders	price: € 35,00
item: 33C - Base for centrifuge with door	price: € 450,00

Technical features:	CASTING without base	CASTING with base
Feeding:	220 V - 50 Hz	220 V - 50 Hz
Max power:	370 Watt	370 Watt
Fuses A:	10	10
Dimensions:	60x57x33 cm	60x57x94 cm
Weight:	43 Kg	60 Kg

INDUCTION MELTING MACHINE

item: 445/00 - TROPICAST



Induction melting machine is used for the melting of every dental alloys. It has a last-generation generator that allows low fusion time along with the possibility to check the fusion without overheating the alloy in case of base metals and precious metals.The low electric power absorption (2.5 KW) allows its use even in small laboratories that do not have at their disposal a high power supply. Metal casting in the cylinder is achieved by centrifuging and the rotation movement is soft and vibrations-free. The positioning of the arm is equipped with a fixed position counterweight that allows a perfect balance, employing 4 cylinders Degussa type (1X, 3X, 6X, 9X). In any case, it is possible the use any cylinders, even with free expansion.The machine is equipped with an internal and forced cooling closed-loop system therefore it mustn't be connected to the water supply. At the moment of the installation it is necessary the water tank with distilled water (2,5 l).

price: € 7.900,00



Technical features:	
Power:	2.2 KW
Power supply:	230 V AC
Fusion capability:	up to 100 g base metal - up to 80 g precious metal
Medium frequency resonance:	85 KHz
Cooling:	internal, forced, closed-loop system
Weight:	70 Kg

SAND BLASTING MACHINE

item: 656/00 - SANDY 2



Double-container micro-sandblasting system. Exceptional functionality and unbeatable value for money. Make it works a prerequisite for all labs with up to three people. It can with 25 to 250 micron abrasives. Prefitted for connection to an aspirator (AIRBOX) complete with three nozzles: 0,8 - 1,2 and 1,5 mm

Main features:

- 2 aluminium containers.
- Anti-moisture system.
- Use abrasive 25/250 microns.
- Precise sandblasting.
- Reliable construction.
- Small dimensions.
- Ready for AIRBOX.
- Low price.

price: € 1.120,00



Technical features:

Dimensions:	35x37x32 cm
Weight:	12 Kg

item: 656/01 - Aluminium oxide 50 microns, pack. 5 Kg € 60,00

item: 656/02 - Aluminium oxide 100 microns, pack. 5 Kg € 60,00

item: 656/03 - Aluminium oxide 200 microns, pack. 5 Kg € 60,00

item: 656/04 - Crystal microspheres 90/150, pack. 5 Kg € 60,00

UNIVERSAL PHOTOPOLYMERIZATOR

item: 737/00 - POWER LIGHT



It permits the lightpolymerizing of any acrylic appliance on the market. A cooling fan situated on the back, avoids an overheating, with use for a long time. During the lightpolymerizing the internal temperature not exceed 40 °C. Nine lamps situated around a plate in motion, consent light action in any point of composite. Alternate disposition of the lamps permit emission of UVA rays and white light covering the spectrum of all light curing materials (320-550 nm). The lamps must be replaced every 1000 hours of work; (a counter placed on the right side indicates total time). The control functions are placed on the frontal panel, and up here it is possible to select the length lighpolymerizing cycle, from 1 to 99 minutes. The end of the cycle is announced by an acoustic signal.

price: € 1.460,00

Technical features:

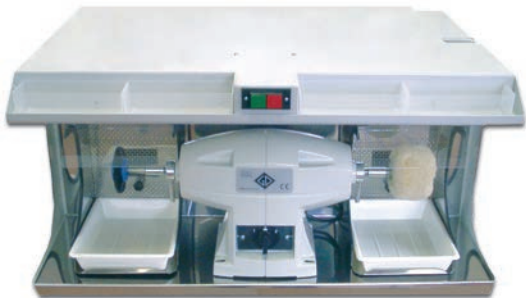
Absorbed power:	250 Watt
Fusible:	2 x 2,5 A
Current supply:	220 V 50 Hz
Lamps:	1 halogen 150 W 4x9 W T1 - 4x9 W T2
Overall size:	25x29x24 cm
Weight:	7 Kg

SUCTION BENCHES

item: 355/00 - BOX

Universal suction unit for laboratories polishing lathes. Necessary for polishing and buffing works. Essential and compact design, is equipped with a new suction system for the best performances. The lighting is supplied with a neon lamp of the power of 18 Watt.

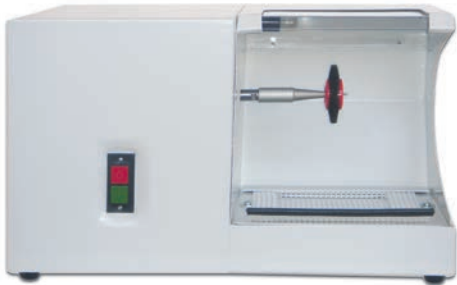
price: € 1.260,00 (polishing not included)



item: 350/00 - SENIOR

Senior model incorporating polishing machine, suitable for small laboratories. Made from electric-welded steel sheet, rustproof painting and textured enamel finishing. Suction hood with 6 watt neon light, 0,5 Hp aspirator with 120 cubic meters/hour suction power, filter from raised fabric for the finest dusts, dust recovery drawer, the right-hand side of hood can be opened to allow the working of large pieces.

price: € 1.040,00



Technical features:	BOX	SENIOR
Noisy:	78 dB	78 dB
Suction power:	150 Watt	400 Watt
Suction capacity:	600 Mc/h	800 Mc/h
Polishing power:	/	400 Watt
Polishing speed:	/	2.800 rpm
Feeding:	230 V - 50/60 Hz	230 V - 50/60 Hz
Dimensions:	80x56x40 cm	55x23x33 cm
Weight:	34 Kg	19 Kg

PLASTER MODEL TRIMMER

item: 650/00 - TRIM 1



TRIM 1 plaster model trimmer with reset switch 500 Watt, 1.450 rpm.	
price:	€ 865,00
item:	29C
Spare abrasive disc, standard.	price € 50,00
item:	30C
Spare abrasive disc, fine grain	price € 50,00
item:	004/R1
Kit for orthodontics	price € 140,00

item: 649/00 - ECO-TRIM



ECO-TRIM with diamond disc, reset switch, 3 years warranty on the disc 500 Watt, 1.450 rpm.	
price:	€ 1.090,00
item:	649/20
Trim eco disk (diamond disk)	price € 330,00

Technical features:	TRIM 1	ECO-TRIM
Absorbed power:	500 Watt	500 Watt
Speed:	1.450 rpm	1.450 rpm
Dimensions:	30x38x32 cm	30x38x32 cm
Weight:	16 Kg	16 Kg

ARTICULATORS

MagicArt is a new innovative articulator without using dental plaster.

Technical features:

- Save working time;
- Save cost of dental plaster;
- Easy and fast mounting;
- Better presentation to dentist;
- Protect the original plaster model;
- Available both full and half arch;
- Wide range of accessories;
- Very light and comfortable;
- Convenient price.

item: 735/00 - MAGIC ART 1 (half arch)

price: € 75,00



item: 736/00 - MAGIC ART 2 (full arch)

price: € 80,00



WORK STATION

item: 663/00 - MICROBOX



Cabinet for the milling and finishing of precious metals and for the treatment of hazardous volatile chemicals. A pull-out drawer collects residues of the precious alloys. The tube supplied with the unit enables to connect an Airbox GS or any other aspirator system. It can also be used for small milling jobs in the dental surgeries. It is made of plexiglass and all joints are proof bonded.

price: € 240,00

Technical features:

Dimensions:	32x30x25 cm
Weight:	3 Kg

item: 664/00 - LABO STATION



LABO STATION is a safety working place cabinet for finishing works with micromotors. It is equipped with several lateral entrances both on the left and on the right side, with neon light, fast-air-connector and power supply intake for the dust extraction unit Airbox (for simultaneous switch-on/off), wooden air-stock-intake, internal work-top recovered of wood and easily replaceable, a wide sized glass window, a drain trellis for the falling down of heavy powders and air syringe.

price: € 700,00

Technical features:

Dimensions:	60x40x40 cm
Weight:	15 Kg

PORTABLE SUCTION UNITS

item: 657/00 - AIR BOX



Portable suction unit for the extraction of dust, residues and abrasives. It can be used in conjunction of Micro-sandblasting systems, as well as and virtually with any lab bench. Its (optional) Airstock all-purpose air in-taket turns any table into a working bench. Professional and extremely noiseless. It has an adjustable suction force and it is equipped with 4 filters made of BIA-compliant microfabric. AIR BOX has passed the German TUV-GS quality test and its dust-abatement rate is up to 99,9% (SGS Ecologia Tests).

price: € 840,00

Technical features:

Feeding:	220-230 V
Power absorption:	900 Watt
Insulation class:	I
Type of unit:	B
Mode of use:	continuous
Frequency:	50/60 Hz
Noise:	68 dB
Dimensions:	33x25x38 cm
Air capacity:	39 L/S (max)
Weight:	12 Kg

item: 657/20

Spare filters (packaging 4 pieces)

price: € 85,00

item: 659/00 - AIR BOX SIMPLEX



AIRBOX SIMPLEX is a portable suction unit suitable in dental laboratories for the suction of working powders. Its main characteristic is the noiseless and the adjustable suction force.

price: € 630,00

Technical features:

Feeding:	220-230 V
Power absorption:	800 Watt
Insulation class:	I
Type of unit:	B
Mode of use:	continuous
Frequency:	50/60 Hz
Noise:	68 dB
Dimensions:	38x29x40 cm
Air capacity:	39 L/S (max)
Weight:	12 Kg

item: 659/20

Spare filters (packaging 4 pieces)

price: € 85,00

PORTABLE SUCTION UNITS

item: 661/00 - MINI BOX EMC



Portable dust extractor, specifically designed for the finishing at the bench of metals, ceramics and resins. The equipped EMC (Electronic Micromotor Control), enables both switch on and off automatically and simultaneously with the micromotor. The suction power can be adjusted and the change of the filters is simple and quick. The competitive price and the versatility of this device allow to modify every bench into a modern finishing area. Ready to use with AIRBASE and AIRSTOCK (optional).

price: € 380,00

Technical features:

Feeding:	220 V
Max absorbed power:	300/600 Watt
Insulation class:	I
Type of unit:	B
Mode of use:	intermittence
Frequency:	50/60 Hz
Noise:	68,8 dB
Dimensions:	28x22x26 cm
Air capacity:	20 L/S (max)
Weight:	6 Kg

item: 661/20

Spare filters (packaging 4 pieces)

price: € 18,00

ACCESSORIES FOR PORTABLE SUCTION UNITS



item: 658/00 - SUCKY AIRSTOCK

Universal air intake with both left and right connections to be placed on tables or benches for aspiration system. It is supplied with a replaceable wooden base, a plexiglass protection shield for eyes and face, system with both screws and removable clamp for its fixing. Suitable to be used with both Airbox GS and Minibox EMC.

price: € 105,00



item: 662/00B - AIRBASE LOC-ONE

Articulated aspiration arm with memory of the position. It is made of a special tube that allows both tightening up to its blocking and flexibility without keeping its position, easily by screwing in or off its coils by hands. Airbase is supplied with a rubber intake and metal base. Can be placed both on a working bench or on the wall right behind the bench, by bi-adhesive tape or screws. Suitable to be used both with Airbox GS and Minibox EMC.

price: € 175,00

item: 662/00M - AIRBASE LOC-ONE CLAMP TYPE

price: € 175,00

ULTRASONIC WASHING MACHINE

item: 711/00 - CP 104 STD ULTRASONIC WASH MACHINE



- ULTRASONIC WASH MACHINE with digital display:
- Washing time adjustment: from 2 to 30 min 6 levels.
 - Power regulation from 50% al 99%.
 - Good washing results, indipendently from working conditions
 - Automatic turning off of the heating, in case of water's leakage.
 - Water heating.

price: € 970,00

Technical features:	
Feeding:	115/230 V - 50/60 Hz
Max absorbed power:	300 Watt
Generator power:	200W/100W
Heating power:	200 Watt
Capacity:	4 lt
Frequency:	39 KHz
Bath dimensions:	13,5x23,5x15 cm
Outside dimensions:	32x22x28 cm
Weight:	4 Kg

item: 19413	
Stainless steel basket	price: € 120,00
item: 007/R8	
Beaker and beaker holder	price: € 100,00
item: 9771	
Beaker in Pirex 600ml	price: € 36,00

item: DB 4820 - ULTRASONIC WASH MACHINE



- ULTRASONIC WASH MACHINE with digital display:
- Lengthened tank.
 - Radiator fan.
 - Stronger transducer.
 - Wet-proof PCB.
 - 5 cycles digital timer.
 - Three separable wires.
 - Heather.
 - Industry IC.
 - Circuit protector.
 - Strong plastic housing.

price: € 240,00

Technical features:	
Generator power:	160 W
Capacity:	2,5 lt
Frequency:	39 KHz
Outside dimensions:	35x26x23 cm
Weight:	3 Kg

ULTRASONIC WASHING MACHINE

item: DB 4830 - ULTRASONIC WASH MACHINE



ULTRASONIC WASH MACHINE with digital display:

- 3 color LED display.
- Advanced programming.
- Drainage valve.
- Increased tank capacity and opening size.
- Ceramic heater.
- Cooling fan.
- Industrial IC.

price: € 340,00

Technical features:

Power:	150 W
Capacity:	3 lt
Tank size:	25x17x8 cm
Digital timer:	1 to 30 minutes full range time
Ultrasonic frequency:	36.000 Hz
Weight:	3,6 Kg

item: DB 4860 - ULTRASONIC WASH MACHINE



ULTRASONIC WASH MACHINE with digital display:

- Large tank capacity and opening size.
- Drainage valve.
- Two industrial grade ultrasonic transducers.
- Two ceramic heaters.
- 2-color LED display.
- Independent control circuit for each ultrasonic transducer.
- Multiple circuit protectors.
- Cooling fan.
- Moisture-proofed PCB.
- Degas feature.
- Industrial IC.
- Housing made from engineering resin.

price: € 700,00

Technical features:

Power:	290 W
Capacity:	6 lt
Tank size:	33.1x23.8x10.5 cm
Digital timer:	1 to 30 minutes full range time
Ultrasonic frequency:	35.000 Hz
Weight:	9,3 Kg

item: DB 4862 - ULTRASONIC WASH MACHINE



ULTRASONIC WASH MACHINE with digital display:

- Large tank capacity.
- Suspensible basket.
- Control panel with capacitive sensing technology.
- Drainage valve.
- Two industrial grade ultrasonic transducers.
- Two ceramic heaters.
- 3 color LED display.
- Multiple circuit protectors.
- Two cooling fan.
- De-gas feature.

price: € 835,00

Technical features:

Power:	260 W
Capacity:	6 lt
Tank size:	32.3x20.5x9.9 cm
Outside dimensions:	51.5x37x32.5 cm
Weight:	8,6 Kg

POLISHING MACHINES

item: 320/00 - MAP-1



Polishing machine for continuous duty Map-1 one speed (2.800 rpm), 500 Watt.

price: € 315,00

Technical features:

Speed:	2.800 rpm
Power:	500 Watt
Dimensions:	52x12x23,5 cm
Weight:	10 Kg

item: 330/00 - MAP-2



Polishing machine for continuous duty Map-2 two speed (1.400/2.800 rpm), 500 Watt.

price: € 400,00

Technical features:

Speed:	1.400/2.800 rpm
Power:	500 Watt
Dimensions:	52x12x23,5 cm
Weight:	10,5 Kg

item: 321/00 - LUX-1



Polishing machine for intermittent duty LUX-1 one speed (2.800 rpm) 300 Watt.

price: € 260,00

Technical features:

Speed:	2.800 rpm
Power:	300 Watt
Dimensions:	45x13x21 cm
Weight:	6 Kg

item: 322/00 - LUX-2



Polishing machine for intermittent duty LUX-2 two speed (1.400/2.800 rpm), 300 Watt.

price: € 325,00

Technical features:

Speed:	1.400/2.800 rpm
Power:	300 Watt
Dimensions:	45x13x21 cm
Weight:	6,4 Kg

item: 323/00 - LUX-1 DX



Polishing machine for intermittent duty single right-shaft LUX-1 DX one speed (2.800 rpm) 300 Watt.

price: € 250,00

Technical features:

Speed:	2.800 rpm
Power:	300 Watt
Dimensions:	28x14x21 cm
Weight:	6 Kg

POLISHING MACHINES

item: 324/00 - LUX-1 SX



Polishing machine for intermittent duty single left-shaft LUX-1 SX one speed (2.800 rpm) 300 Watt.

price: € 250,00

Technical features:

Speed:	2.800 rpm
Power:	300 Watt
Dimensions:	28x14x21 cm
Weight:	6 Kg

item: 325/00 - LUX-FLEX



Polishing machine for intermittent duty Lux-Flex one speed (2.800 rpm), 300 Watt.

price: € 250,00

Technical features:

Speed:	2.800 rpm
Power:	300 Watt
Dimensions:	28x14x21 cm
Weight:	6 Kg

item: 326/00 - LUX-OR



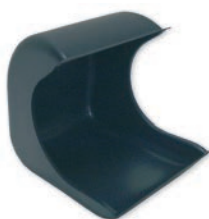
Polishing machine for intermittent duty, for watchmaking (1 speed). Complete with grinding-wheel and flexible shaft connection. 300 W - 2.800 rpm.

price: € 300,00

Technical features:

Speed:	2.800 rpm
Power:	300 Watt
Dimensions:	28x14x21 cm
Weight:	6 Kg

item: 34C



Plastic splash guard for polishing machines.

price: € 50,00

Technical features:

Dimensions:	27x22x25 cm
Weight:	400 g

item: 34CMET



Metal splash guard for polishing machines.

price: € 72,00

Technical features:

Dimensions:	27x22x25 cm
Weight:	2 Kg

HANGING TYPE MOTORS SERIES F 80 NEW FV 80 PLUS (FOR GOLDSMITH)



item: 233/00 - F80 NEW

Ideal for goldsmith or light workings; 110 W; 8000 rpm.

price: € 120,00

item: 234/00 - F80 NEW KIT

Complete with electronic rheostat (item 358/00V), flexible shaft and handpiece with four collets: 0/1/2,35/3 mm (item 150/00).

price: € 330,00

item: 235/00 - F80 NEW KIT

Complete with electronic rheostat (item 358/00V), flexible shaft and handpiece with four collets: 0/1/2,35/3 mm (item 151/00).

price: € 330,00

item: 240/00 - FV80 PLUS

Complete of cable for goldsmith working, upgraded; 130 W; 10.000 rpm.

price: € 140,00

item: 241/00 - FV80 PLUS KIT

Complete with electronic rheostat (item 358/00V) and flexible shaft (item 110/00).

price: € 345,00

item: 242/00 - FV80 PLUS KIT

Complete with electronic rheostat (item 358/00V) and flexible shaft (item 111/00).

price: € 345,00

HANGING TYPE MOTORS SERIES M.I. (FOR INDUSTRY)



item: 280/00 - M.I. 12

Industrial motor 150 W – 12.000 rpm with 1 cable.

price: € 215,00

item: 281/00 - M.I. 12 KIT

M.I. 12 motor complete with electronic rheostat (item 358/00V), flexible shaft and handpiece with four collets: 2,35/3/4/6 mm (item 174/00).

price: € 405,00

item: 290/00 - M.I. 20

Industrial for die-sinker 180 W – 20.000 rpm with 1 cable.

price: € 225,00

item: 291/00 - M.I. 20 KIT

M.I. 20 motor complete with electronic rheostat (item 358/00), flexible shaft and handpiece with four collets: 2,35/3/4/6 mm (item 174/00).

price: € 415,00

HANGING TYPE MOTORS SERIES M.O.



item: 250/00 - M.O. 15

High speed motor, for dental laboratory; 150 W; 15.000 rpm; with 1 cable.

price: € 205,00

item: 251/00 - M.O. 15 KIT

M.O. 15 motor complete with electronic rheostat (item 358/00) and flexible shaft (item 120/00).

price: € 405,00

item: 252/00 - M.O. 15 KIT

M.O. 15 motor complete with electronic rheostat (item 358/00) and flexible shaft (item 121/00).

price: € 405,00

item: 260/00 - M.O. 18

High speed, 180 W; 18.000 rpm; with 1 cable.

price: € 215,00

item: 261/00 - M.O. 18 KIT

M.O. 18 motor complete with electronic rheostat (item 358/00) and flexible shaft (item 120/00).

price: € 415,00

item: 262/00 - M.O. 18 KIT

M.O. 18 motor complete with electronic rheostat (item 358/00) and flexible shaft (item 121/00).

price: € 415,00

item: 270/00 - M.O. 25

High speed, 180 W; 25.000 rpm; with 1 cable.

price: € 215,00

item: 271/00 - M.O. 25 KIT

M.O. 25 motor complete with electronic rheostat (item 358/00) and flexible shaft (item 130/00).

price: € 425,00

item: 272/00 KIT

M.O. 25 motor complete with electronic rheostat (item 358/00) and flexible shaft (item 131/00).

price: € 425,00

HANGING TYPE MOTORS SERIES M.I. (FOR INDUSTRY)



item: 275/00 - M.O. 25

Complete with Faro gear type connection; 180W; 25.000 rpm
price: € 215,00

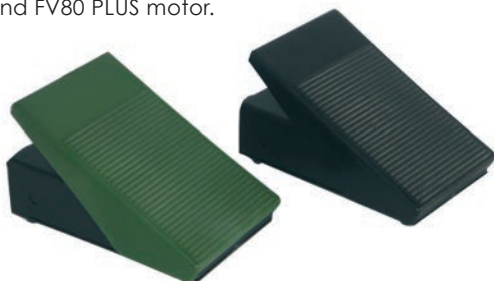
item: 276/00 - M.O. 25 KIT

M.O. 25 motor complete with electronic rheostat (item 358/00) and flexible shaft gear type (item 136/00).
price: € 425,00

MOTORS ACCESSORIES

item: 358/00V

Footprint electronic rheostat with double cable for series F80 NEW and FV80 PLUS motor.
price: € 68,00



item: 358/00

Footprint electronic rheostat with double cable.
price: € 68,00

item: 358/28

Protection for electronic rheostat.
price: € 14,00

item: 380/00

Bench type support, screw fixing.
price: € 75,00



item: 390/00

Bench type support, clamp fixing.
price: € 80,00



item: 371/00



Hand speed regulator for hanging motor.
price: € 55,00

LABORATORY FLEXIBLE SHAFTS WITH BEARINGS



MARELLI CONNECTION



item: 110/00 - TML PLASTIC

TML light duty type (4 mm core) with plastic sheathing and Marelli connection.
price: € 105,00

item: 111/00 - TML METAL

TML light duty type (4 mm core) with metallic sheathing and Marelli connection.
price: € 105,00

item: 120/00 - S-TML PLASTIC

S-TML heavy duty type (4 mm strengt. core) with plastic sheathing and Marelli connection.
price: € 110,00

item: 121/00 - S-TML METAL

S-TML heavy duty type (4 mm strengt. core) with metal sheathing and Marelli connection.
price: € 110,00

item: 130/00 - TML-52 PLASTIC

TML-52 heavy duty type (5 mm strengt. core) with plastic sheathing and Marelli connection.
price: € 118,00

item: 131/00 - TML-52 METAL

TML-52 heavy duty type (5 mm strengt. core) with metallic sheathing and Marelli connection.
price: € 118,00

CASALI CONNECTION



item: 132/00 - TML-52 CASALI PLASTIC

TML-52 (5 mm strengthened core) with plastic sheathing and Casali connection.
price: € 118,00

item: 133/00 - TML-52 CASALI METAL

TML-52 (5 mm strengthened core) with metallic sheathing and Casali connection.
price: € 118,00

FARO CONNECTION

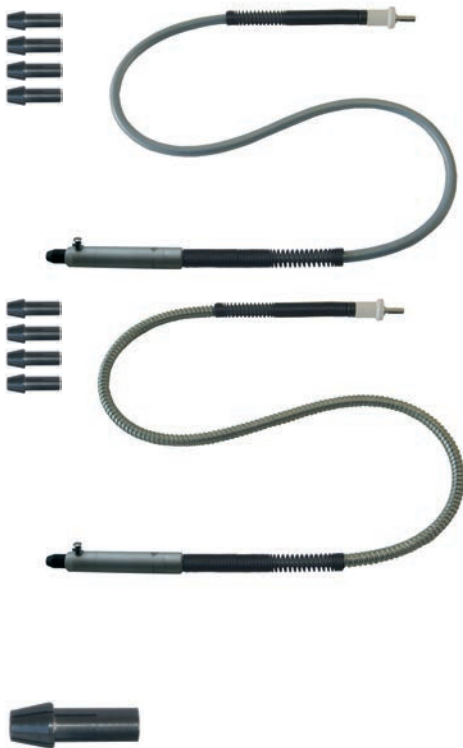


item: 136/00 - TML-52 FARO METAL

TML-52 (5 mm strengthened core) with metallic sheathing and Faro gear-type connection.
price: € 132,00

FLEXIBLE SHAFTS WITH HAND-PIECES

MARELLI CONNECTION



item: 150/00 - TML-O PLASTIC

Flexible shaft TML-O light duty type, for goldsmith, with built-in hand-piece, 4 collets (mm 0/1/2,35/3) with plastic sheathing and Marelli connection.
price: € 125,00

item: 151/00 - TML-O METAL

Flexible shaft TML-O light duty type, for goldsmith, with built-in hand-piece, 4 collets (mm 0/1/2,35/3) with metal sheathing and Marelli connection.
price: € 125,00

item: 152/00 - S/TML-O PLASTIC

Flexible shaft S-TML-O heavy duty type, for goldsmith, with built-in hand-piece, 4 collets (mm 0/1/2,35/3) with plastic sheathing and Marelli connection.
price: € 132,00

item: 153/00 - S/TML-O METAL

Flexible shaft S-TML-O heavy duty type, for goldsmith, with built-in hand-piece, 4 collets (mm 0/1/2,35/3) with metal sheathing and Marelli connection.
price: € 132,00

item: 003/R7 - Spare handpiece	price: € 75,00
item: 47F - Foot switch	price: € 16,00
item: 33B - Collet ø 0 mm	price: € 8,00
item: 34B - Collet ø 1,00 mm	price: € 8,00
item: 57D - Collet ø 1,50 mm	price: € 8,00
item: 58D - Collet ø 2,00 mm	price: € 8,00
item: 35B - Collet ø 2,35 mm	price: € 8,00
item: 32B - Collet ø 3,00 mm	price: € 8,00

item: 170/00 - I/TML-52 PLASTIC

Flexible shaft I-TML-52 with built-in hand-piece, four collets (mm 2,35-3-4-6) for M.O. series dental laboratory motors with plastic sheathing.
price: € 145,00

item: 171/00 - I/TML-52 METAL

Flexible shaft I-TML-52 with built-in hand-piece, four collets (mm 2,35-3-4-6) for M.O. series dental laboratory motors with metallic sheathing.
price: € 145,00

M.I. CONNECTION



item: 174/00 - I/TML-52 M.I. METAL

Flexible shaft I-TML-52 with built-in hand-piece, four collets (mm 2,35-3-4-6) for M.I. series industrial motors with metallic sheathing.
price: € 145,00

item: 30B - Collet ø 2,35 mm	price: € 9,00
item: 29B - Collet ø 3,00 mm	price: € 9,00
item: 28B - Collet ø 4,00 mm	price: € 9,00
item: 23B - Collet ø 6,00 mm	price: € 9,00

HAND-PIECES



item: 140/00



Bayonet-joint hand-piece complete with four collets (mm 0/1/2,35/3).
price: € 87,00

item: 141/00 - SILVER



High precision hand-piece with bayonet joint with 2,35 mm collet.
price: € 126,00



item: 141/23 - Collet ø 1,00 mm price: € 20,00



item: 141/22 - Collet ø 2,35 mm price: € 20,00



item: 141/24 - Collet ø 3,00 mm price: € 20,00

item: 180/00 - T30



Laboratory hand-piece complete with 2,35 mm collet.
price: € 118,00



item: 001/R2 - Collet ø 2,35 mm price: € 17,00

item: 181/00 - T30



Laboratory hand-piece complete with 3 mm collet.
price: € 118,00



item: 001/R6 - Collet ø 3,00 mm price: € 17,00

item: 160/00



Bayonet-joint industrial hand piece complete with four collets: 2,35/3/4/6 mm.
price: € 120,00

item: 165/00



Bayonet-joint industrial hand-piece with 0 to 4 mm spindle.
price: € 215,00

item: 190/00



Hammering hand-piece bayonet-joint type complete with 2 points.
price: € 105,00

HAND-PIECES WITH AMERICAN FOREDOM CONNECTION

item: 142/00



Bayonet-joint hand-piece complete with four collets (mm 0/1/2,35/3) and American Foredom connection.

price: € 72,00

item: 143/00



Bayonet-joint hand-piece complete with four collets (mm 0/1/2,35/3) and American Foredom connection with duplex spring connection.

price: € 81,00

item: 161/00



Bayonet-joint industrial hand piece complete with four collets (2,35/3/4/6 mm) and American Foredom connection.

price: € 97,00

item: 162/00



Bayonet-joint industrial hand piece complete with four collets (2,35/3/4/6 mm) and American Foredom connection with duplex spring connection.

price: € 148,00

item: 167/00



Bayonet-joint industrial hand-piece with 0 to 4 spindle and American Foredom connection.

price: € 165,00

item: 168/00



Bayonet-joint industrial hand-piece with 0 to 4 spindle and American Foredom connection with duplex spring connection.

price: € 210,00

item: 182/00



Laboratory hand-piece complete with 2,35 mm and American Foredom connection.

price: € 99,00

item: 183/00



Laboratory hand-piece complete with 2,35 mm and American Foredom connection with duplex spring connection.

price: € 151,00

item: 191/00



Hammering hand-piece bayonet-joint type and American Foredom connection.

price: € 89,00

item: 192/00



Hammering hand-piece bayonet-joint type and American Foredom connection with duplex spring connection.

price: € 136,00